

The image depicts a scene with a purple wall and a wooden floor. A large, irregular hole is punched through the purple wall, revealing a solid black void behind it. The edges of the hole are jagged and cracked, suggesting a violent impact. The purple wall has a slightly textured appearance. Below the wall is a horizontal band of light brown wood, and at the bottom, a wooden floor with vertical planks is visible. The overall composition is centered and symmetrical.

**MYSTERIET MED HULLET I VEGGEN**



**HVORDAN DET HELE BEGYNTE**

---





**HVORDAN HAVNET VI HER?**

---

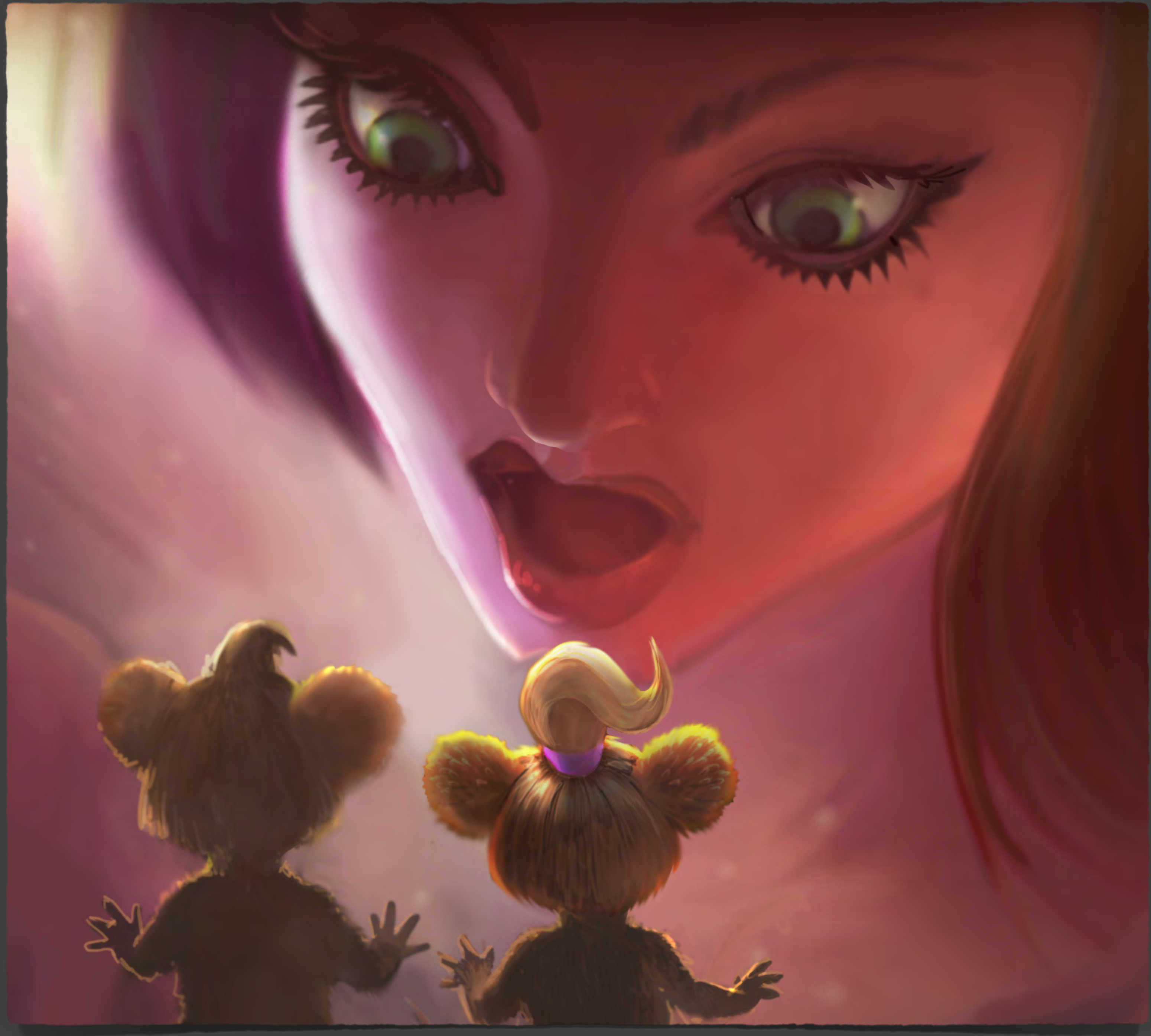
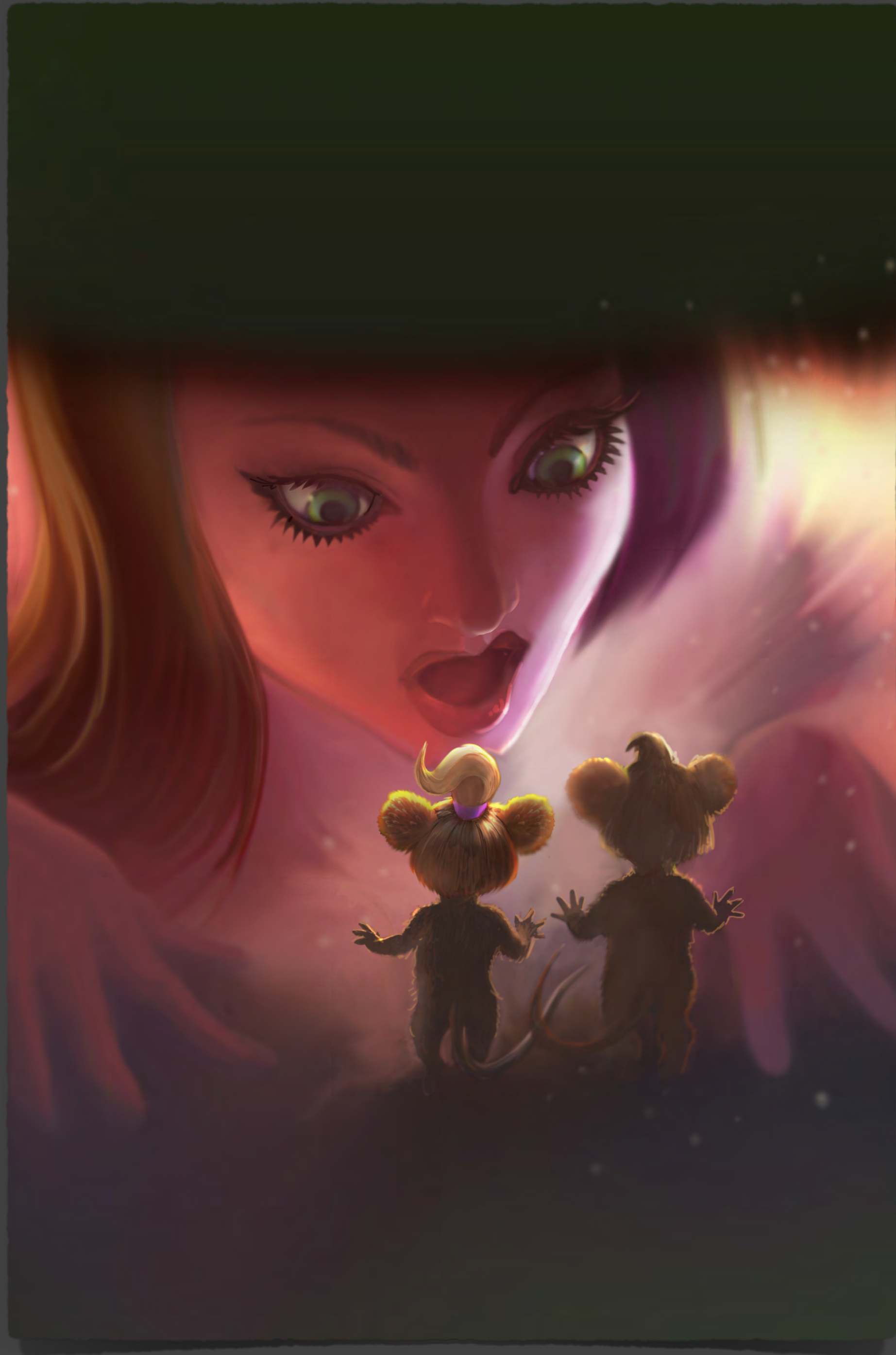




meow  
G











**ET HULL I VEGGEN**

---













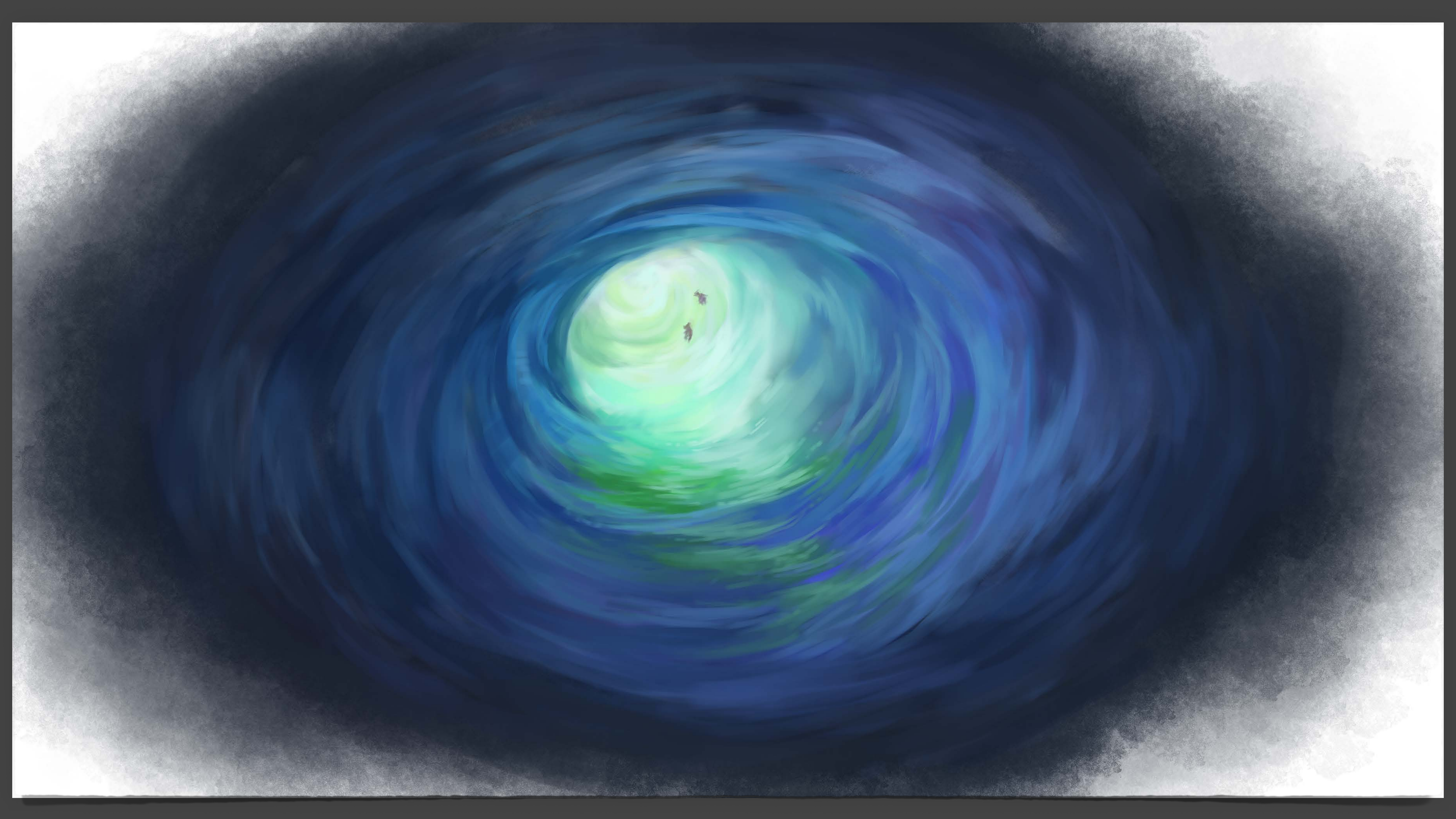
**TILBAKE TIL  
MENNESKEVERDENEN**

---













# FARGEBLINDE MUS

---

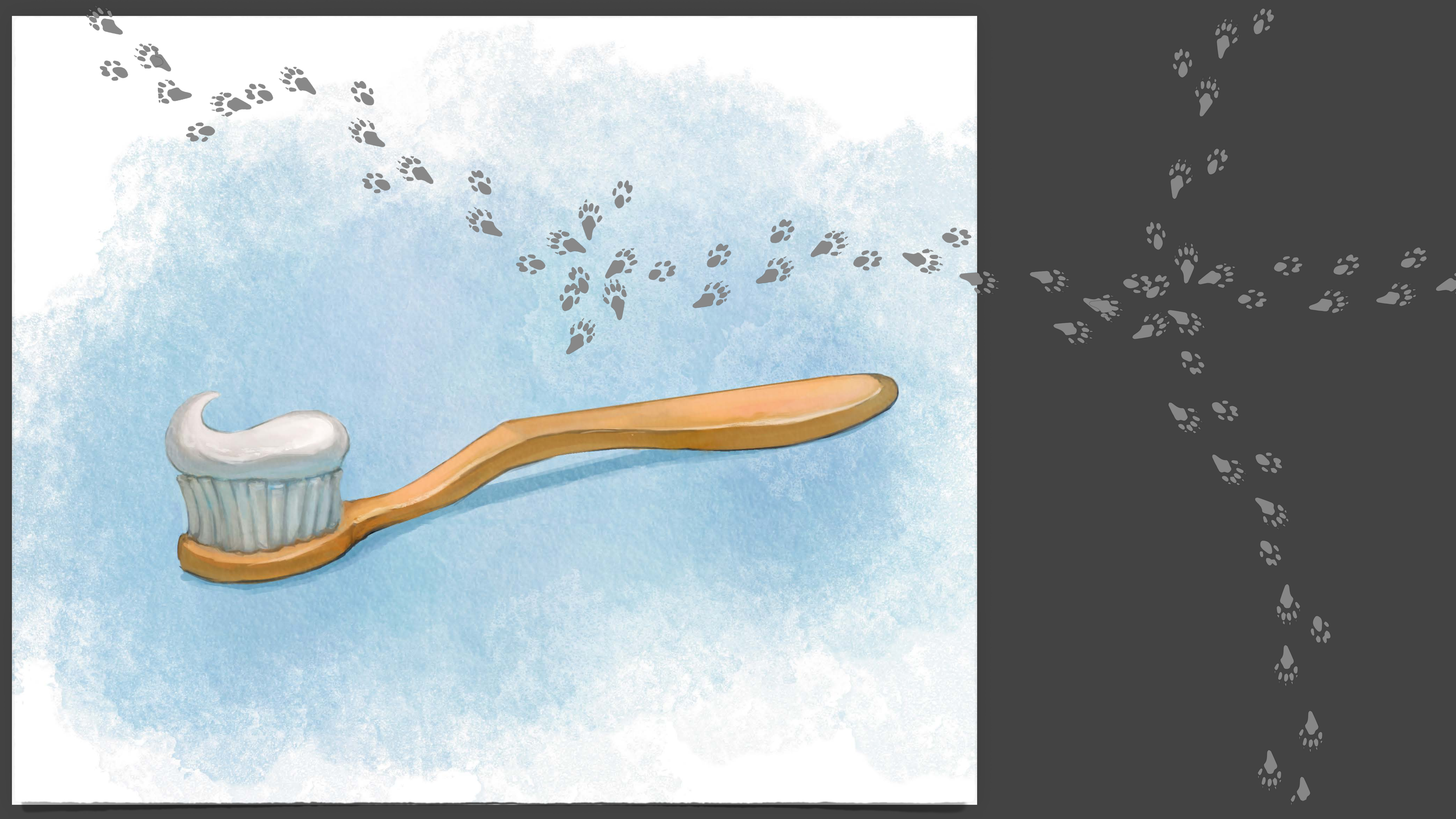








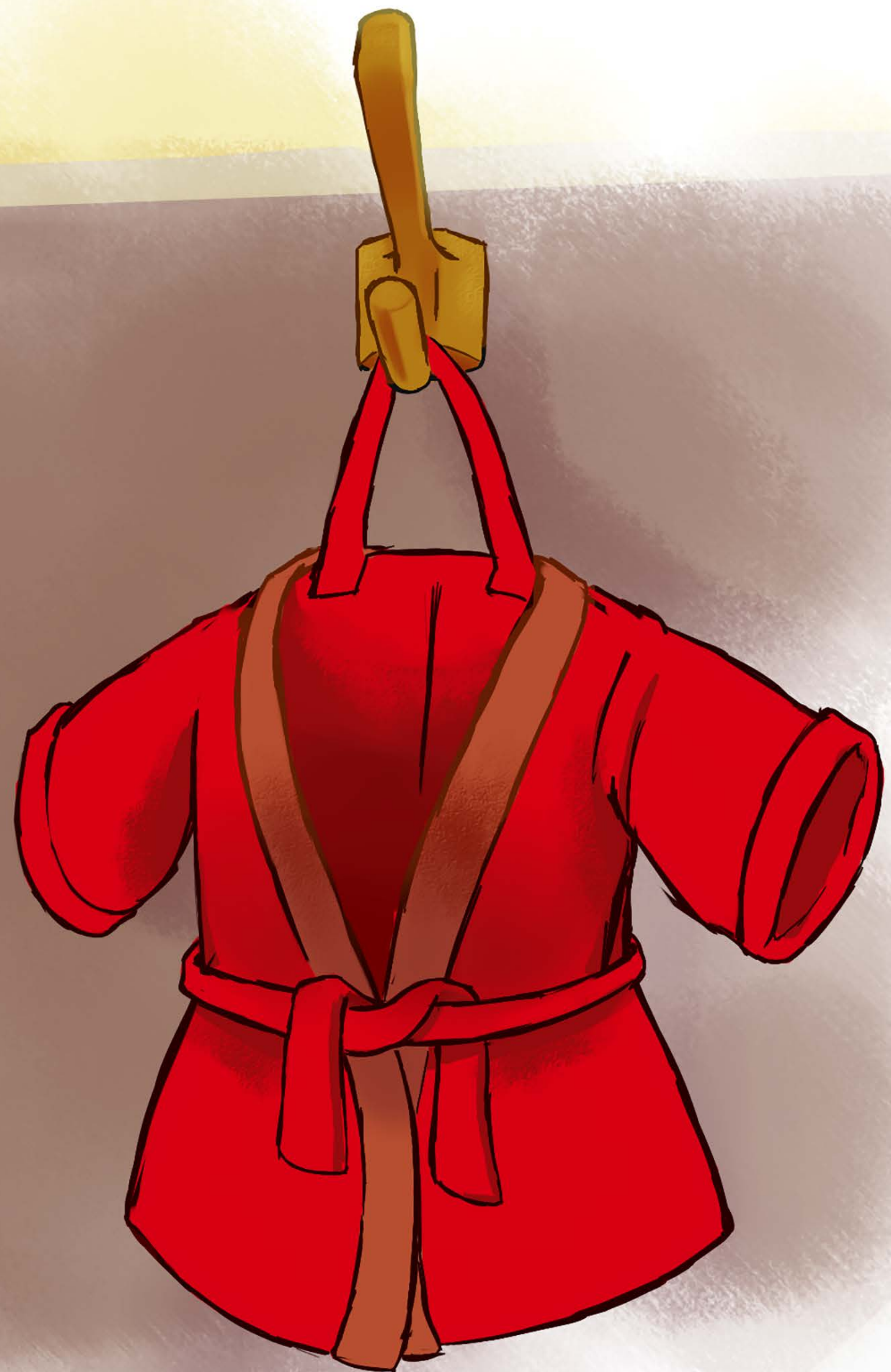
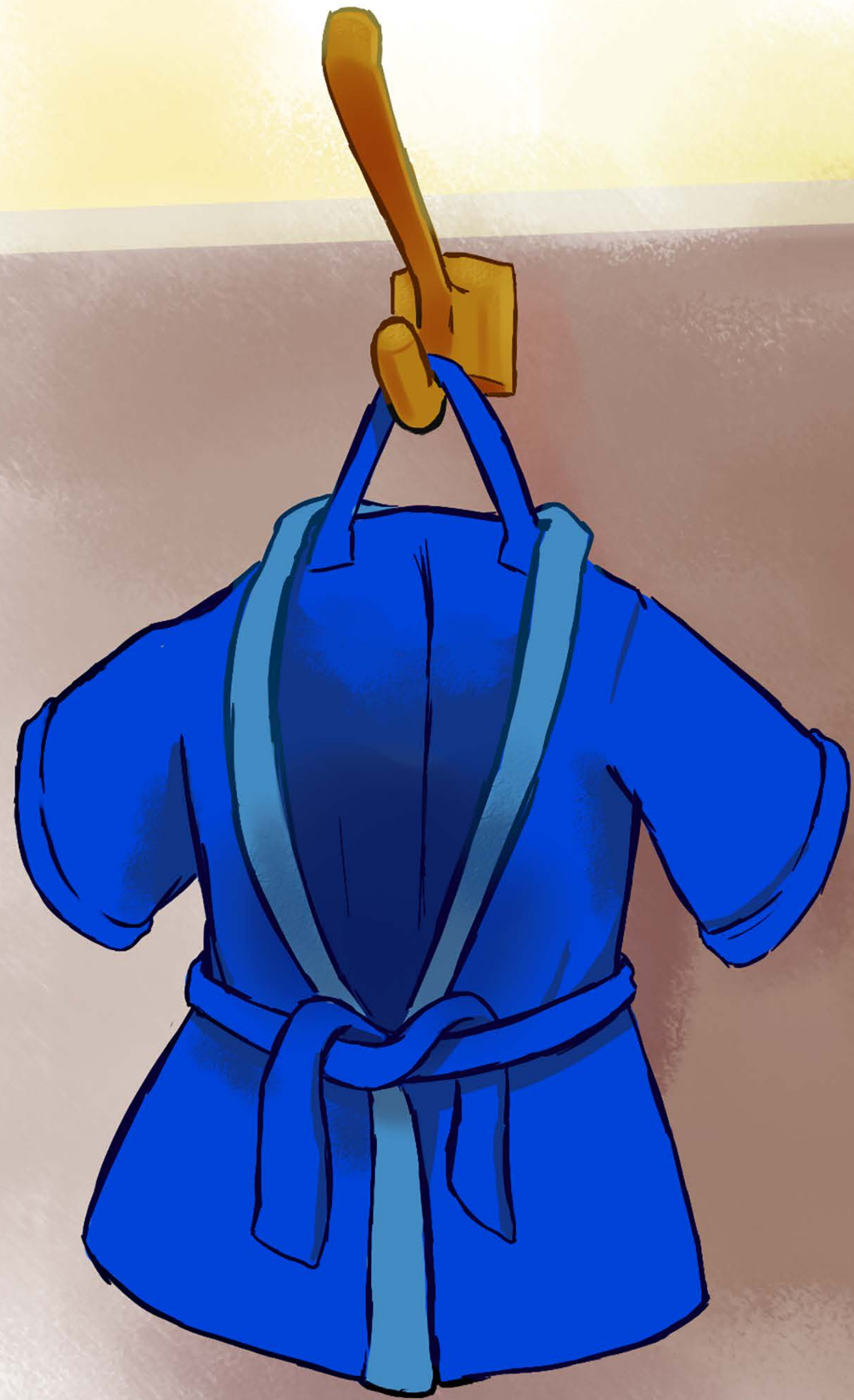






**MISS PÅ NASSEN**

---







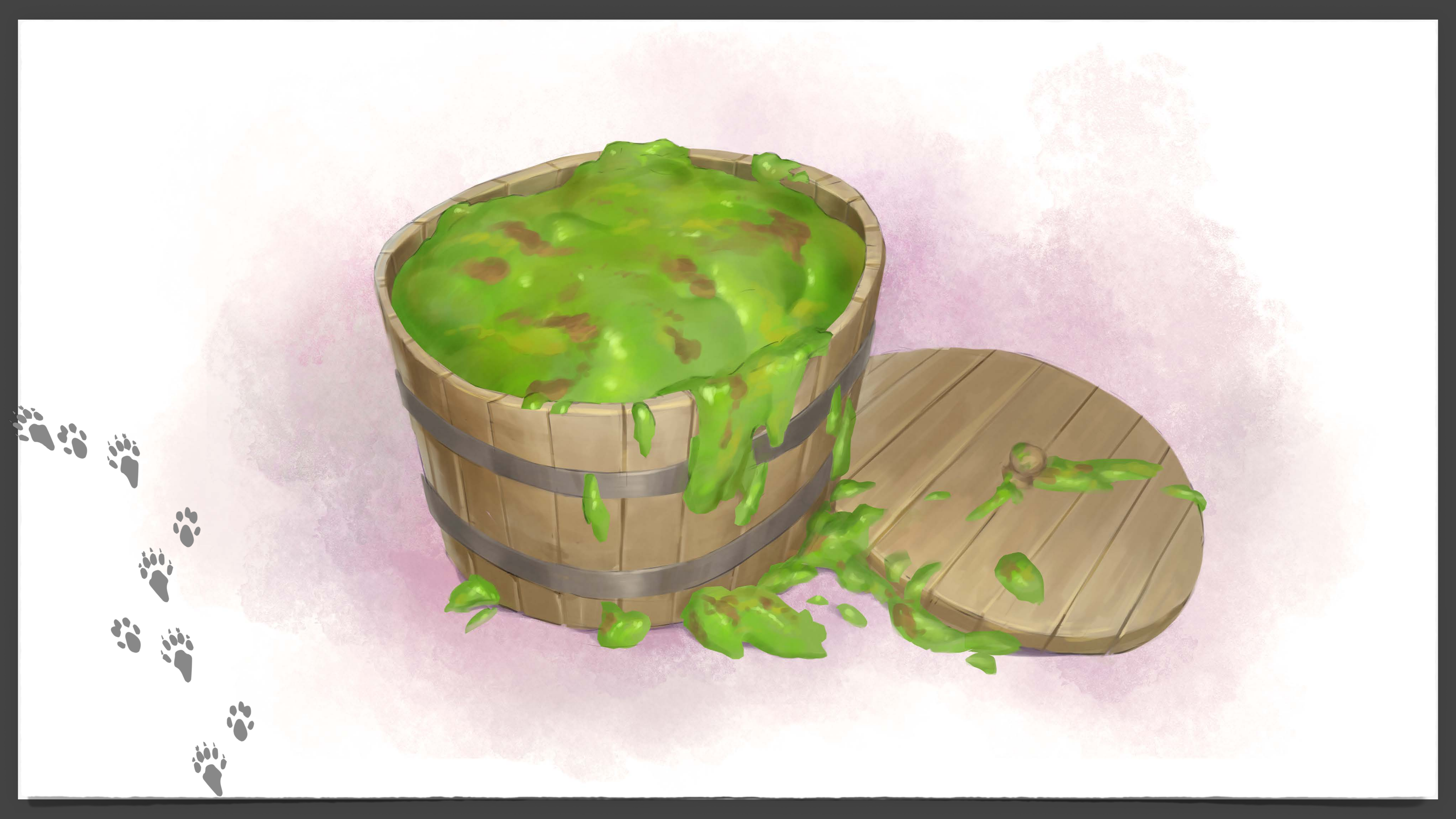




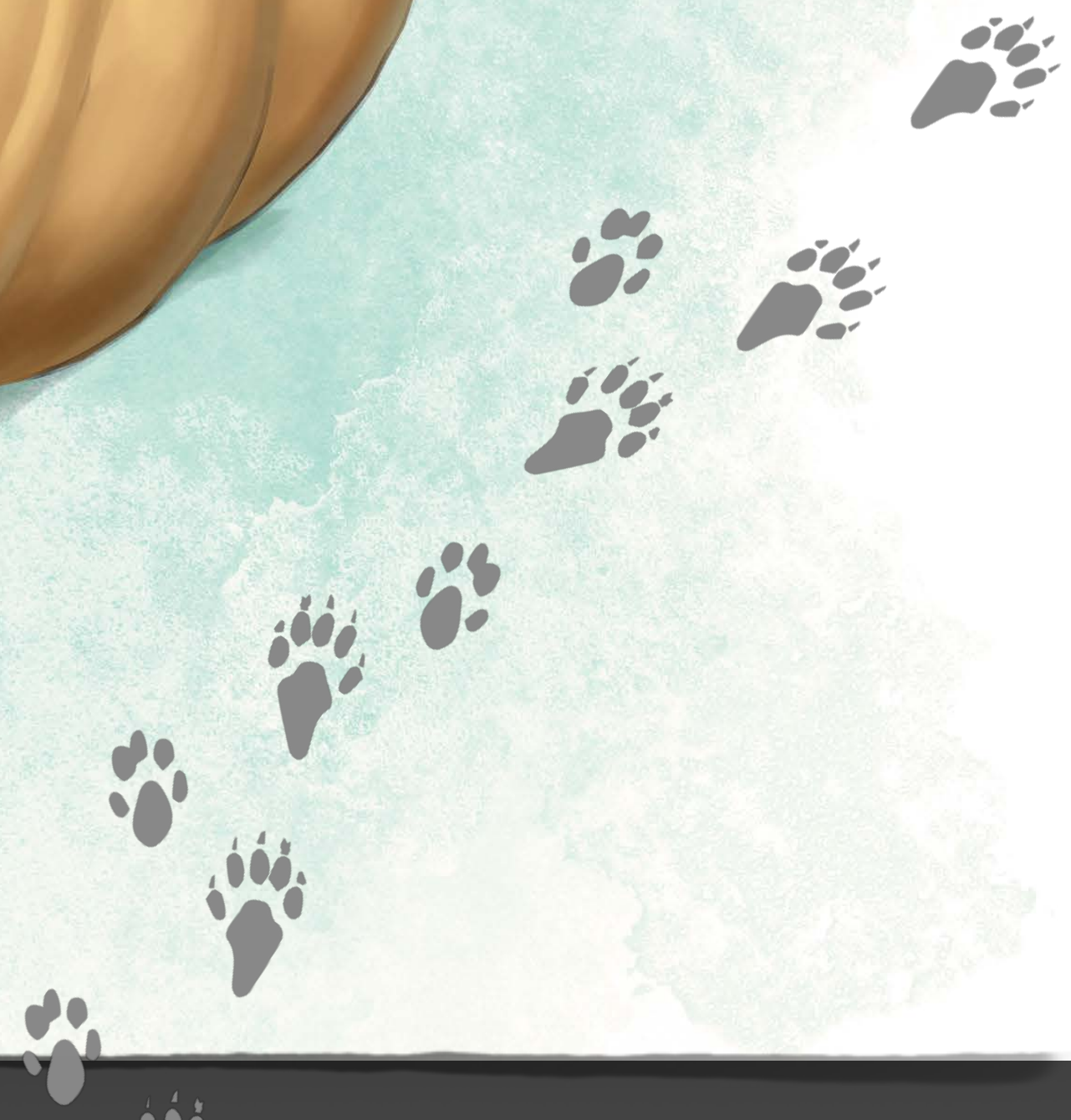
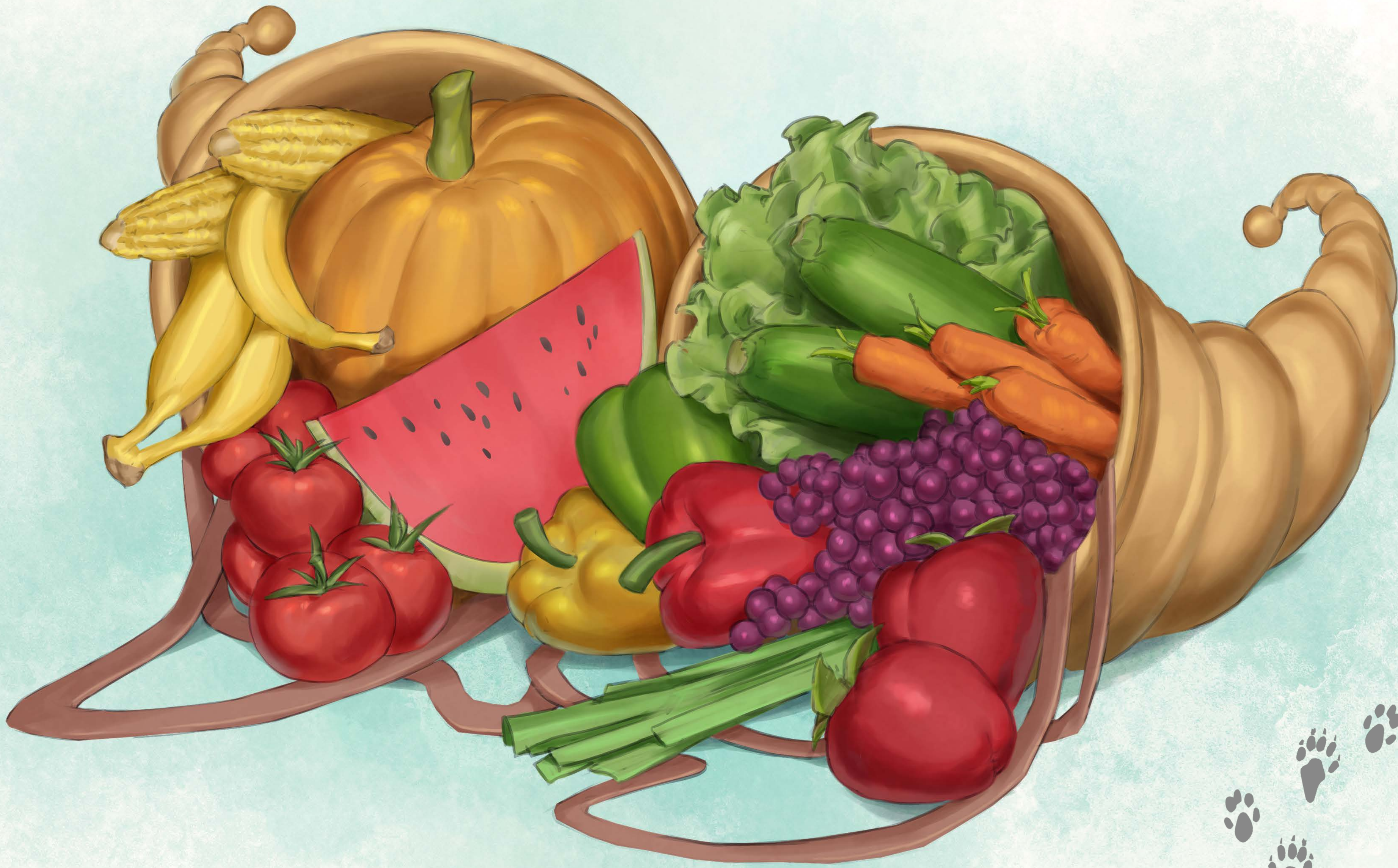


**DUEJEGERNE KOMMER!**

---





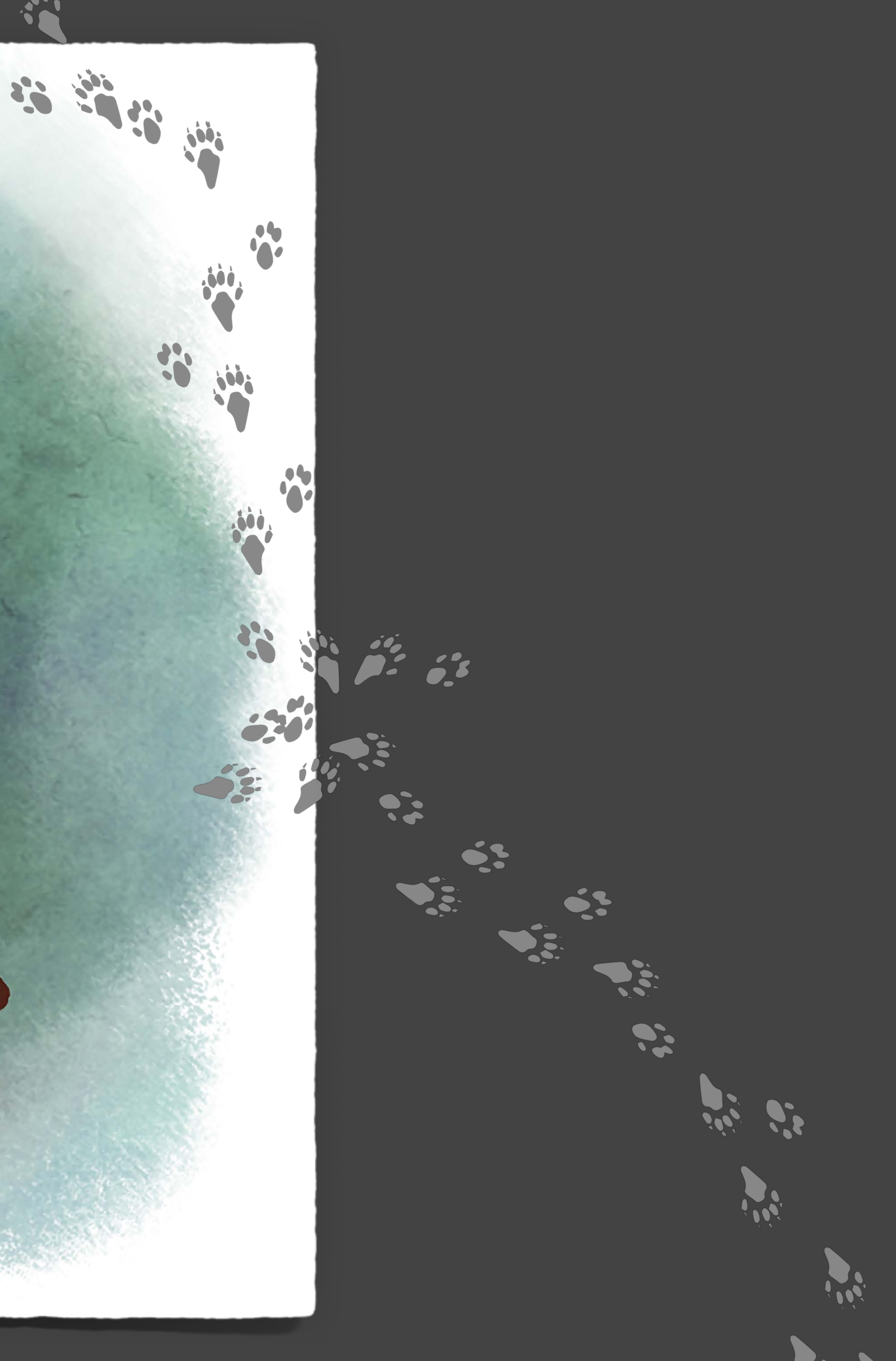




# I GRIBBELINES KJØKKEN

---











# BRÅK PÅ GÅRDSPLASSEN

---









**TA-TAS HEMMELIGE  
KONTAKT**

---





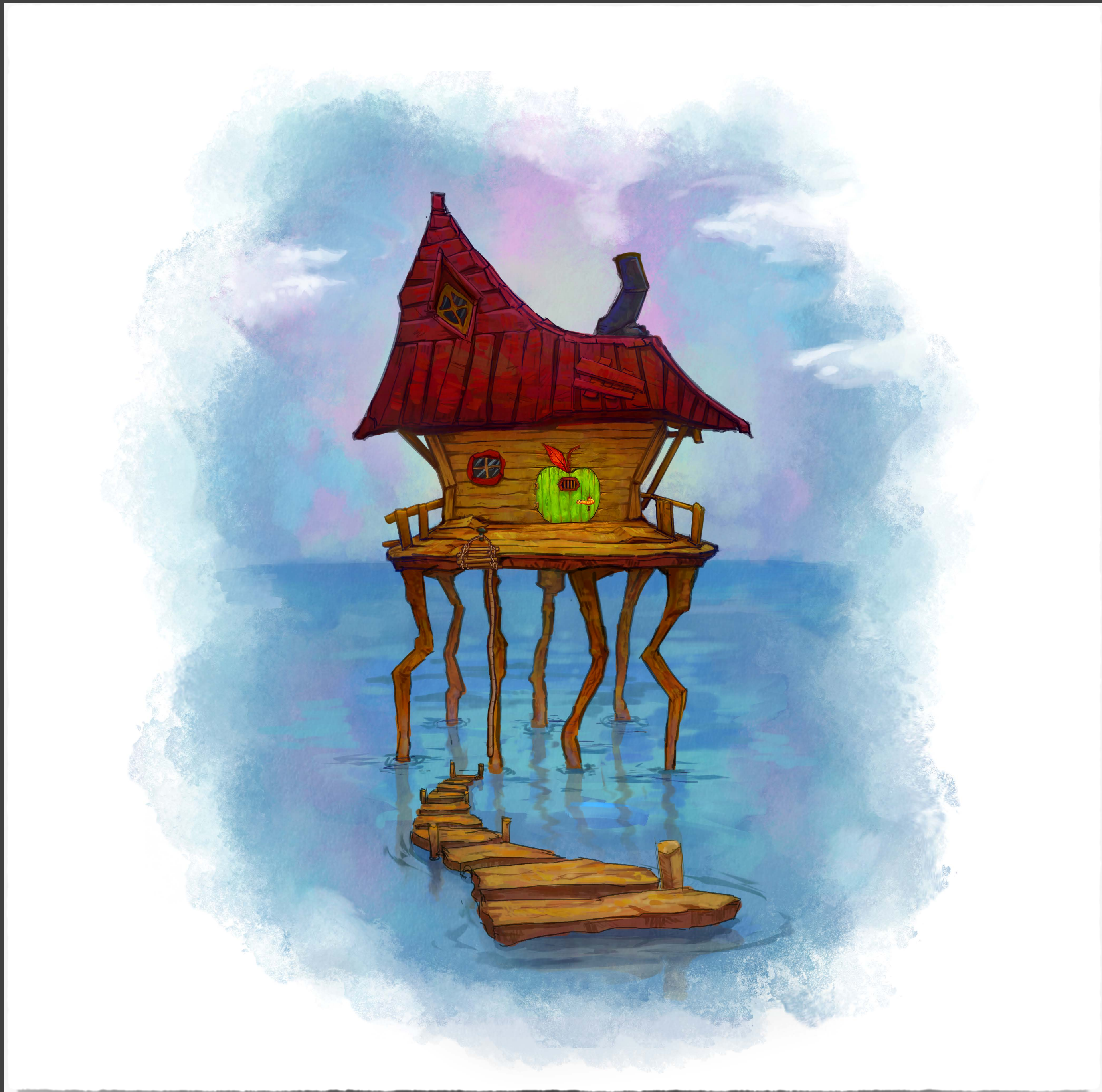














# DET HVISKESIKRE HUSET









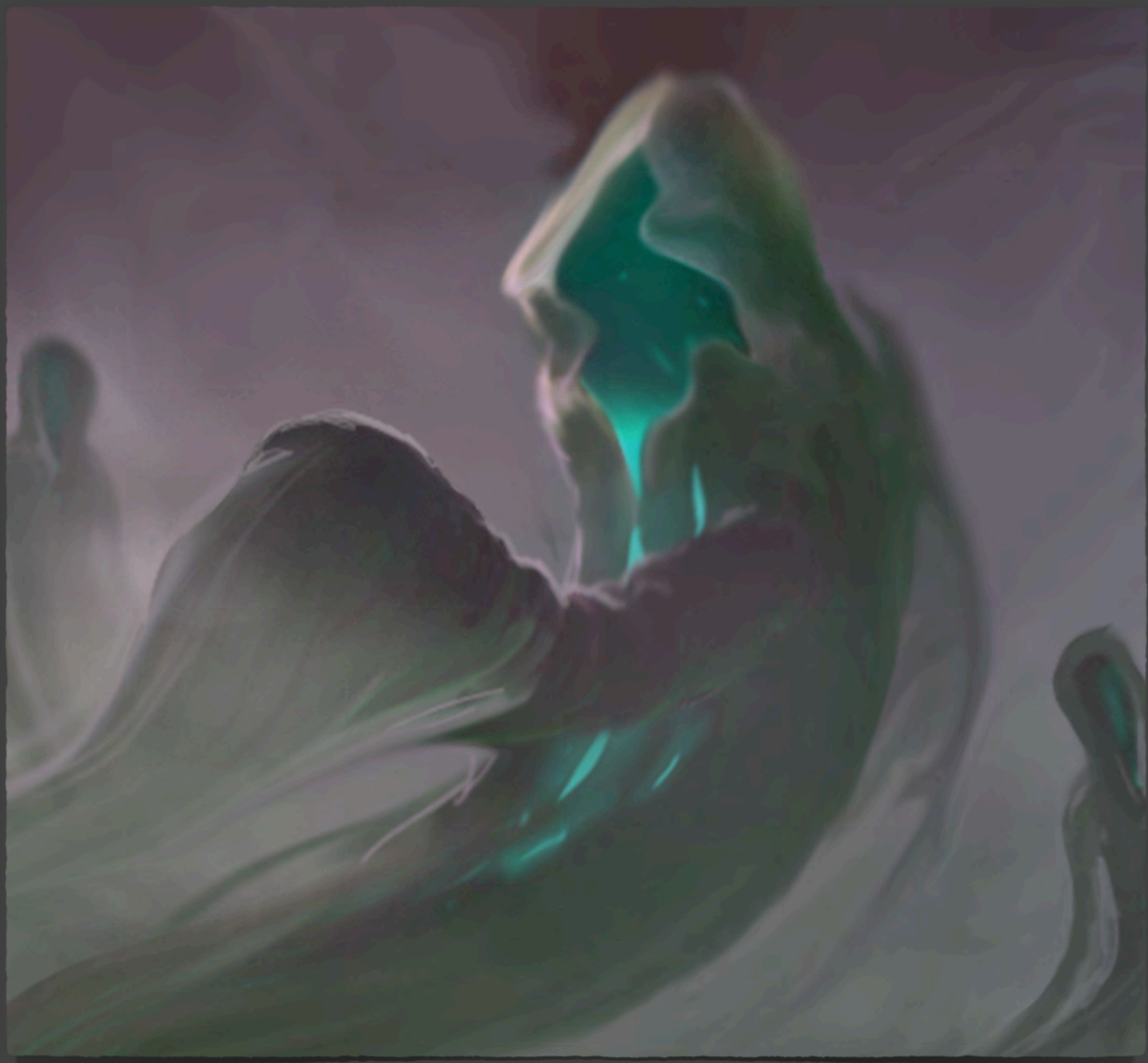






**SANNHETEN OM  
MAMMA OG PAPPA**

---













# BLADPRATEREN OG SPORILLE

---









# Illustrasjoner av:

Shen Fei & Ted Ottoson

Lærerveiledninger til bøkene finner du på [www.cappelendamm.no](http://www.cappelendamm.no)

**Kontakt:** [post@cappelendamm.no](mailto:post@cappelendamm.no)

CAPPELEN DAMM